

Reverse Polarity SMA Plug to SMA Female Cable Using PE-SR405FL Coax with HeatShrink



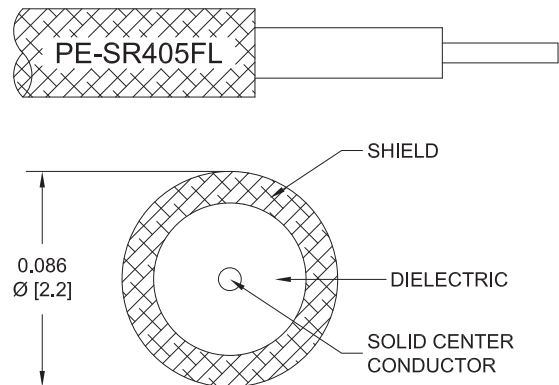
PE3W15458/HS

Configuration

- Connector 1: SMA Plug Reverse Polarity
- Connector 2: SMA Female
- Cable Type: PE-SR405FL
- Coax Flex Type: Formable

Features

- Max Frequency 18 GHz
- 69.5% Phase Velocity



Applications

- General Purpose
- Laboratory Use

Description

Pasternack's PE3W15458/HS reverse polarity SMA plug to SMA female cable using PE-SR405FL coax is part of our full line of RF components available for same-day shipping. Pasternack's formable RF cable assemblies provide an alternative to costly pre-formed semi-rigid assemblies since they are hand formable. This Pasternack reverse polarity SMA to SMA cable assembly has a plug to female gender configuration with 50 ohm formable PE-SR405FL coax. The PE3W15458/HS reverse polarity SMA plug to SMA female cable assembly operates to 18 GHz.

Custom versions of most RF cable assemblies can be built and shipped same day. Custom cable assembly lengths can be obtained by specifying the desired length on the web site at time of order or by contacting a sales representative. Other available RF cable assembly value added services include connector orientation or clocking, heat shrink booting and custom labeling. RF testing can also be performed to document the electrical performance of your cable assembly.

Electrical Specifications

Description	Minimum	Typical	Maximum	Units
Frequency Range	DC		18	GHz
VSWR			1.4:1	
Velocity of Propagation		69.5		%
Capacitance		29 [95.14]		pF/ft [pF/m]
DC Resistance Inner Conductor		65.7 [215.55]		Ohms/1000ft [Ohms/Km]
DC Resistance Outer Conductor		10.2 [33.46]		Ohms/1000ft [Ohms/Km]

Specifications by Frequency

Reverse Polarity SMA Plug to SMA Female Cable Using PE-SR405FL Coax with HeatShrink



PE3W15458/HS

Part Number	Length	Description	F1	F2	F3	F4	F5	Units	Weight (lbs)
			Frequency		1000	2000	4500	9000	
PE3W15458/HS	Custom Lengths Available	Insertion Loss (Typ.)	0.225	0.306	0.509	0.759	1.122	dB/ft	
			0.74	1.01	1.67	2.5	3.69	dB/m	
PE3W15458/HS-6	6 In	Insertion Loss (Typ.)	0.32	0.36	0.46	0.58	0.77	dB	0.512
PE3W15458/HS-9	9 In	Insertion Loss (Typ.)	0.37	0.43	0.59	0.77	1.05	dB	0.515
PE3W15458/HS-12	12 In	Insertion Loss (Typ.)	0.43	0.51	0.71	0.96	1.33	dB	0.517
PE3W15458/HS-24	24 In	Insertion Loss (Typ.)	0.65	0.82	1.22	1.72	2.45	dB	0.529
PE3W15458/HS-36	36 In	Insertion Loss (Typ.)	0.88	1.12	1.73	2.48	3.57	dB	0.54

The insertion loss data for the base model does not include loss due to the connectors. Each length includes insertion loss due to the connectors.

Loss due to Connector 1:	0.1 dB
Loss due to Connector 2:	0.1 dB
Base Weight:	0.517 pounds
Additional Weight per Inch:	0.00092 pounds

Mechanical Specifications

Cable Assembly

Width/Diameter	0.5 in [12.7 mm]
Weight	0.506 lbs [229.52 g]

Cable

Cable Type	PE-SR405FL
Impedance	50 Ohms
Inner Conductor Type	Solid
Inner Conductor Material and Plating	Copper Clad Steel, Silver
Dielectric Type	PTFE
Number of Shields	1
Outer Conductor 1 Material and Plating	Copper, Tin
Repeated Minimum Bend Radius	0.78 in [19.81 mm]

Reverse Polarity SMA Plug to SMA Female Cable Using PE-SR405FL Coax with HeatShrink



PE3W15458/HS

Connectors

Description	Connector 1	Connector 2
Type	SMA Plug Reverse Polarity	SMA Female
Specification		MIL-STD-348
Impedance	50 Ohms	50 Ohms
Configuration	Straight	Straight
Contact Material and Plating	Brass, Gold	Beryllium Copper, Gold
Contact Plating Specification	MIL-G-45204	MIL-G-45204
Dielectric Type	PTFE	PTFE
Outer Conductor Material and Plating		Stainless Steel, Gold
Body Material and Plating	Stainless Steel, Gold	Stainless Steel, Gold
Body Plating Specification		MIL-G-45204
Coupling Nut Material and Plating	Stainless Steel, Gold	
Hex Size	5/16 in.	
Torque	5 in-lbs 0.57 Nm	

Environmental Specifications

Compliance Certifications (see [product page](#) for current document)

Plotted and Other Data

Notes:

Reverse Polarity SMA Plug to SMA Female Cable Using PE-SR405FL Coax with HeatShrink



PE3W15458/HS

Typical Performance Data

How to Order

Part Number Configuration:

PE3W15458/HS - xx uu

_____ Unit of Measure:
 cm = Centimeters
 <blank> = Inches
 _____ Length
 _____ Base Number

Example: PE3W15458/HS-12 = 12 inches long cable
 PE3W15458/HS-100cm = 100 cm long cable

Reverse Polarity SMA Plug to SMA Female Cable Using PE-SR405FL Coax with HeatShrink from Pasternack Enterprises has same day shipment for domestic and International orders. Our RF, microwave and millimeter wave products maintain a 99.4% availability and are part of the broadest selection in the industry.

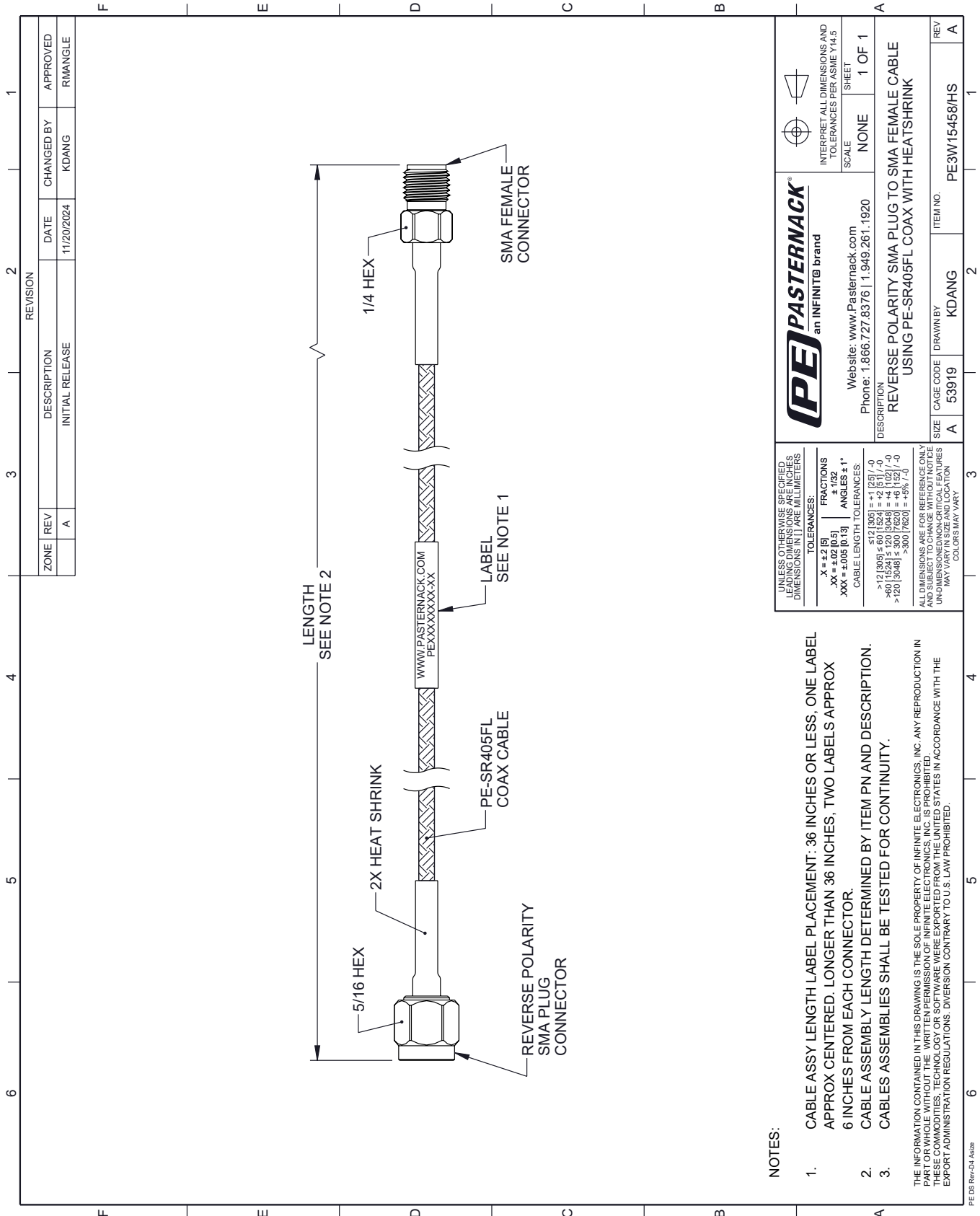
Click the following link (or enter part number in "SEARCH" on website) to obtain additional part information including price, inventory and certifications: [Reverse Polarity SMA Plug to SMA Female Cable Using PE-SR405FL Coax with HeatShrink PE3W15458/HS](#)

URL: <https://www.pasternack.com/reverse-polarity-sma-plug-to-sma-female-cable-using-pe-sr405fl-with-heatshrink-pe3w15458-hs-p.aspx>

The information contained within this document is accurate to the best of our knowledge and representative of the part described herein. It may be necessary to make modifications to the part and/or the documentation of the part in order to implement improvements. Pasternack Enterprises reserves the right to make such changes as required. Unless otherwise stated, all specifications are nominal. Pasternack Enterprises does not make any representation or warranty regarding the suitability of the part described herein for any particular purpose, and Pasternack Enterprises does not assume liability arising out of the use of any part or document.

PE3W15458/HS CAD Drawing

Reverse Polarity SMA Plug to SMA Female Cable Using PE-SR405FL Coax with HeatShrink



REVISION		DATE	CHANGED BY	APPROVED
ZONE	REV			
	A	11/20/2024	KDANG	RMANGLE
DESCRIPTION				
INITIAL RELEASE				

NOTES:

1. CABLE ASSY LENGTH LABEL PLACEMENT: .36 INCHES OR LESS, ONE LABEL APPROX CENTERED. LONGER THAN .36 INCHES, TWO LABELS APPROX .6 INCHES FROM EACH CONNECTOR.
2. CABLE ASSEMBLY LENGTH DETERMINED BY ITEM PN AND DESCRIPTION.
3. CABLE ASSEMBLIES SHALL BE TESTED FOR CONTINUITY.

THE INFORMATION CONTAINED IN THIS DRAWING IS THE SOLE PROPERTY OF INFINITE ELECTRONICS, INC. ANY REPRODUCTION IN PART OR WHOLE WITHOUT THE WRITTEN PERMISSION OF INFINITE ELECTRONICS, INC. IS PROHIBITED. THESE COMMODITIES, TECHNOLOGY OR SOFTWARE WERE EXPORTED FROM THE UNITED STATES IN ACCORDANCE WITH THE EXPORT ADMINISTRATION REGULATIONS. DIVERSION CONTRARY TO U.S. LAW PROHIBITED.

UNLESS OTHERWISE SPECIFIED, LEADING DIMENSIONS ARE IN INCHES. DIMENSIONS IN [] ARE MILLIMETERS.	
TOLERANCES:	FRACTIONS
.X = ±.2 [5]	± 1/32
.XX = ±.02 [0.5]	± .005
.XXX = ±.005 [0.13]	ANGLES ± 1°
CABLE LENGTH TOLERANCES:	
<12 [305]	±.1 [2.5] / -0
>12 [305] ≤ 60 [1524]	±.2 [5] / -0
>60 [1524] ≤ 120 [3048]	±.4 [102] / -0
>120 [3048]	±.8 [20.3] / -0
ALL DIMENSIONS ARE FOR REFERENCE ONLY. UNDIMENSIONED NON-CRITICAL FEATURES MAY VARY IN SIZE AND LOCATION. COLORS MAY VARY.	

(PE) PASTERNAK
an INFINITE brand

Website: www.Pasternack.com
Phone: 1.866.727.8376 | 1.949.261.1920

INTERPRET ALL DIMENSIONS AND TOLERANCES PER ASME Y14.5

SCALE: NONE

SHEET: 1 OF 1

DESCRIPTION		ITEM NO.
REVERSE POLARITY SMA PLUG TO SMA FEMALE CABLE USING PE-SR405FL COAX WITH HEATSHRINK		PE3W15458/HS
SIZE	CAGE CODE	REV
A	53919	A
DRAWN BY		
KDANG		