

Reverse Polarity TNC Male Right Angle to N Female Bulkhead Cable Using RG303 Coax



PE3W16476

Configuration

- Connector 1: TNC Male Reverse Polarity Right Angle
- Connector 2: N Female Bulkhead
- Cable Type: RG303
- Coax Flex Type: Flexible

Features

- Max Frequency 3 GHz
- 69% Phase Velocity
- FEP Jacket

Applications

- General Purpose
- Laboratory Use

Description

Pasternack's PE3W16476 reverse polarity TNC male right angle to type N female bulkhead cable using RG303 coax is part of our full line of RF components available for same-day shipping. Pasternack's flexible RF cable assemblies are ideal for applications where tight bends and flexure are required. This Pasternack reverse polarity TNC to type N cable assembly has a male to female gender configuration with 50 ohm flexible RG303 coax. The PE3W16476 reverse polarity TNC male to type N female cable assembly operates to 3 GHz. The right angle TNC interface on the RG303 cable allows for easier connections in tight spaces. Our RF cable assembly with type N bulkhead interface allows designers to create external connections on their product enclosures, and can be used in a variety of other rack mount and panel mount applications.

Custom versions of most RF cable assemblies can be built and shipped same day. Custom cable assembly lengths can be obtained by specifying the desired length on the web site at time of order or by contacting a sales representative. Other available RF cable assembly value added services include connector orientation or clocking, heat shrink booting and custom labeling. RF testing can also be performed to document the electrical performance of your cable assembly.

Electrical Specifications

Description	Minimum	Typical	Maximum	Units
Frequency Range	DC		3	GHz
Velocity of Propagation		69		%
Capacitance		32 [104.99]		pF/ft [pF/m]

Specifications by Frequency

Reverse Polarity TNC Male Right Angle to N Female Bulkhead Cable Using RG303 Coax



PE3W16476

Part Number	Length	Description	F1	F2	F3	F4	F5	Units	Weight (lbs)
			Frequency		100	250	500	1000	
PE3W16476	Custom Lengths Available	Insertion Loss (Typ.)	0.02	0.05	0.11	0.22	0.645	dB/ft	
			0.08	0.18	0.36	0.71	2.12	dB/m	
PE3W16476-12	12 inch	Insertion Loss (Typ.)	0.33	0.36	0.41	0.52	0.95	dB	0.178
PE3W16476-24	24 inch	Insertion Loss (Typ.)	0.35	0.41	0.52	0.73	1.59	dB	0.205
PE3W16476-36	36 inch	Insertion Loss (Typ.)	0.37	0.47	0.63	0.95	2.24	dB	0.232
PE3W16476-48	48 inch	Insertion Loss (Typ.)	0.39	0.52	0.73	1.16	2.88	dB	0.259
PE3W16476-60	60 inch	Insertion Loss (Typ.)	0.41	0.57	0.84	1.38	3.53	dB	0.286

The insertion loss data for the base model does not include loss due to the connectors. Each length includes insertion loss due to the connectors.

Loss due to Connector 1:	0.2 dB
Loss due to Connector 2:	0.1 dB
Base Weight:	0.178 pounds
Additional Weight per Inch:	0.00225 pounds

Mechanical Specifications

Cable Assembly

Width/Diameter	0.5 in [12.7 mm]
Weight	0.178 lbs [80.74 g]

Cable

Cable Type	RG303
Impedance	50 Ohms
Inner Conductor Type	Solid
Inner Conductor Material and Plating	Copper Clad Steel, Silver
Dielectric Type	PTFE
Number of Shields	1
Shield Layer 1	Silver Plated Copper Braid
Jacket Material	FEP, Tan
Jacket Diameter	0.17 in [4.32 mm]

Reverse Polarity TNC Male Right Angle to N Female Bulkhead Cable Using RG303 Coax



PE3W16476

Connectors

Description	Connector 1	Connector 2
Type	TNC Male Reverse Polarity Right Angle	N Female Bulkhead
Specification	MIL-C-39012	
Impedance	50 Ohms	50 Ohms
Configuration	Right Angle	Straight
Contact Material and Plating	Brass, Gold	Phosphor Bronze, Gold
Contact Plating Specification	30 µin minimum	
Dielectric Type	PTFE	PTFE
Body Material and Plating	Brass, Nickel	Brass, Tri-Metal
Body Plating Specification	100 µin minimum	
Coupling Nut Material and Plating	Brass, Nickel	
Coupling Nut Plating Specification	100 µin minimum	

Environmental Specifications

Operating Range Temperature -55 to +165 deg C

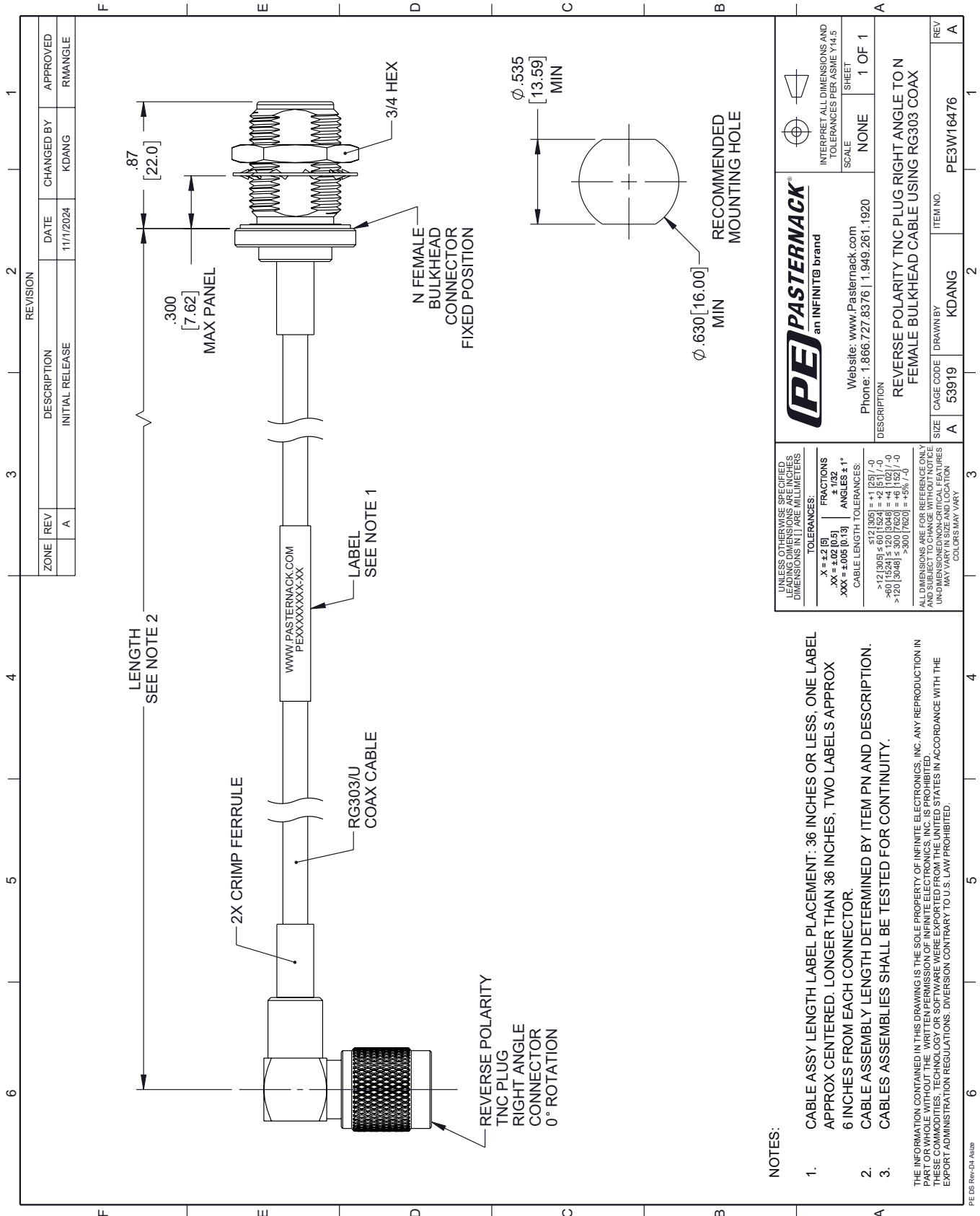
Compliance Certifications (see [product page](#) for current document)

Plotted and Other Data

Notes:

PE3W16476 CAD Drawing

Reverse Polarity TNC Male Right Angle to N Female Bulkhead Cable Using RG303 Coax



REVISION		DATE	CHANGED BY	APPROVED
ZONE	REV			
	A	11/1/2024	KDANG	RMANGLE
DESCRIPTION				
INITIAL RELEASE				

LENGTH
SEE NOTE 2

2X CRIMP FERRULE

RG303/U
COAX CABLE

WWW.PASTERNAK.COM
PEXXXXXXXX-XX

LABEL
SEE NOTE 1

N FEMALE
BULKHEAD
CONNECTOR
FIXED POSITION

3/4 HEX

RECOMMENDED
MOUNTING HOLE

NOTES:

- CABLE ASSY LENGTH LABEL PLACEMENT: .36 INCHES OR LESS, ONE LABEL APPROX CENTERED. LONGER THAN .36 INCHES, TWO LABELS APPROX .6 INCHES FROM EACH CONNECTOR.
- CABLE ASSEMBLY LENGTH DETERMINED BY ITEM PN AND DESCRIPTION.
- CABLE ASSEMBLIES SHALL BE TESTED FOR CONTINUITY.

THE INFORMATION CONTAINED IN THIS DRAWING IS THE SOLE PROPERTY OF INFINITE ELECTRONICS, INC. ANY REPRODUCTION IN PART OR WHOLE WITHOUT THE WRITTEN PERMISSION OF INFINITE ELECTRONICS, INC. IS PROHIBITED. THESE COMMODITIES, TECHNOLOGY OR SOFTWARE WERE EXPORTED FROM THE UNITED STATES IN ACCORDANCE WITH THE EXPORT ADMINISTRATION REGULATIONS. DIVERSION CONTRARY TO U.S. LAW PROHIBITED.

UNLESS OTHERWISE SPECIFIED, LEADING DIMENSIONS ARE IN INCHES. DIMENSIONS IN [] ARE MILLIMETERS.	TOLERANCES: .X = ±.2 [5] .XX = ±.02 [0.5] .XXX = ±.005 [0.13]	FRACTIONS ± 1/32 ANGLES ± 1°
	CABLE LENGTH TOLERANCES: ≤ 12 [305] ± .60 [15.24] = +.2 [5.1] / -0 > 12 [305] ± .60 [15.24] = +.4 [10.2] / -0 > 20 [508] ± .30 [7.62] = +.5% [1.9]	
ALL DIMENSIONS ARE FOR REFERENCE ONLY. UNDIMENSIONED NON-CRITICAL FEATURES MAY VARY IN SIZE AND LOCATION. COLORS MAY VARY.		

(PE) PASTERNAK
an INFINITE brand

Website: www.Pasternack.com
Phone: 1.866.727.8376 | 1.949.261.1920

INTERPRET ALL DIMENSIONS AND TOLERANCES PER ASME Y14.5	
SCALE	NONE
SHEET	1 OF 1

DESCRIPTION		REV
REVERSE POLARITY TNC PLUG RIGHT ANGLE TO N FEMALE BULKHEAD CABLE USING RG303 COAX		A
SIZE	CAGE CODE	ITEM NO.
A	53919	PE3W16476
DRAWN BY		REV
KDANG		A