

Snap-On MMBX Plug Right Angle to Slide-On BMA Jack 2 Hole Flange Cable Using RG316 Coax with HeatShrink



PE3W17100/HS

Configuration

- Connector 1: Snap-On MMBX Plug Right Angle
- Connector 2: Slide-On BMA Jack 2 Hole Flange
- Cable Type: RG316
- Coax Flex Type: Flexible

Features

- Max Frequency 3 GHz
- 69% Phase Velocity
- FEP Jacket



Applications

- General Purpose
- Laboratory Use

Description

Pasternack's PE3W17100/HS MMBX plug snap-on right angle to BMA jack slide-on 2 hole flange cable using RG316 coax is part of our full line of RF components available for same-day shipping. Pasternack's flexible RF cable assemblies are ideal for applications where tight bends and flexure are required. This Pasternack MMBX to BMA cable assembly has a plug to jack gender configuration with 50 ohm flexible RG316 coax. The PE3W17100/HS MMBX plug to BMA jack cable assembly operates to 3 GHz. The right angle MMBX interface on the RG316 cable allows for easier connections in tight spaces. Our RF cable assembly with BMA 2 hole flange interface allows designers to create external connections on their product enclosures, and can be used in a variety of other rack mount and panel mount applications.

Custom versions of most RF cable assemblies can be built and shipped same day. Custom cable assembly lengths can be obtained by specifying the desired length on the web site at time of order or by contacting a sales representative. Other available RF cable assembly value added services include connector orientation or clocking, heat shrink booting and custom labeling. RF testing can also be performed to document the electrical performance of your cable assembly.

Electrical Specifications

Description	Minimum	Typical	Maximum	Units
Frequency Range	DC		3	GHz
VSWR			1.4:1	
Velocity of Propagation		69		%
Jacket Spark			2,000	Vrms

Specifications by Frequency

Snap-On MMBX Plug Right Angle to Slide-On BMA Jack
2 Hole Flange Cable Using RG316 Coax with HeatShrink



PE3W17100/HS

Part Number	Length	Description	F1	F2	F3	F4	F5	Units	Weight (lbs)
			Frequency		100	250	500	1000	
PE3W17100/HS	Custom Lengths Available	Insertion Loss (Typ.)	0.11	0.16	0.24	0.38	0.58	dB/ft	
			0.37	0.53	0.79	1.25	1.91	dB/m	
PE3W17100/HS-12	12 inch	Insertion Loss (Typ.)	0.52	0.57	0.65	0.79	0.99	dB	0.027
PE3W17100/HS-24	24 inch	Insertion Loss (Typ.)	0.63	0.73	0.89	1.17	1.57	dB	0.038
PE3W17100/HS-36	36 inch	Insertion Loss (Typ.)	0.74	0.89	1.13	1.55	2.15	dB	0.048
PE3W17100/HS-48	48 inch	Insertion Loss (Typ.)	0.85	1.05	1.37	1.93	2.73	dB	0.058
PE3W17100/HS-72	72 inch	Insertion Loss (Typ.)	1.07	1.37	1.84	2.69	3.89	dB	0.078

The insertion loss data for the base model does not include loss due to the connectors. Each length includes insertion loss due to the connectors.

Loss due to Connector 1:	0.31 dB
Loss due to Connector 2:	0.1 dB
Base Weight:	0.027 pounds
Additional Weight per Inch:	0.00084 pounds

Mechanical Specifications

Cable Assembly

Width/Diameter	0.5 in [12.7 mm]
Weight	0.017 lbs [7.71 g]

Cable

Cable Type	RG316
Impedance	50 Ohms
Inner Conductor Type	Stranded
Inner Conductor Material and Plating	Copper Clad Steel, Silver
Dielectric Type	PTFE
Number of Shields	1
Shield Layer 1	Silver Plated Copper Braid
Jacket Material	FEP, Tan
Jacket Diameter	0.102 in [2.59 mm]

Connectors

Description	Connector 1	Connector 2
Type	MMBX Plug Right Angle	BMA Jack 2 Hole Flange
Impedance	50 Ohms	50 Ohms
Configuration	Right Angle	Straight
Connection Method	Snap-On	Slide-On
Mating Cycles	100	1,000
Contact Material and Plating	Beryllium Copper, Gold	Beryllium Copper, Gold
Dielectric Type	PTFE	PTFE
Outer Conductor Material and Plating	Brass, Gold	Beryllium Copper, Gold
Body Material and Plating	Brass, Gold	Brass, Tri-Metal

Snap-On MMBX Plug Right Angle to Slide-On BMA Jack 2 Hole Flange Cable Using RG316 Coax with HeatShrink



PE3W17100/HS

Environmental Specifications

Operating Range Temperature -55 to +125 deg C

Compliance Certifications (see [product page](#) for current document)

Plotted and Other Data

Notes:

Typical Performance Data

How to Order

Part Number Configuration: **PE3W17100/HS - xx uu**

_____ Unit of Measure:
 cm = Centimeters
 <blank> = Inches
 _____ Length
 _____ Base Number

Example: PE3W17100/HS-12 = 12 inches long cable
 PE3W17100/HS-100cm = 100 cm long cable

Snap-On MMBX Plug Right Angle to Slide-On BMA Jack 2 Hole Flange Cable Using RG316 Coax with HeatShrink from Pasternack Enterprises has same day shipment for domestic and International orders. Our RF, microwave and millimeter wave products maintain a 99.4% availability and are part of the broadest selection in the industry.

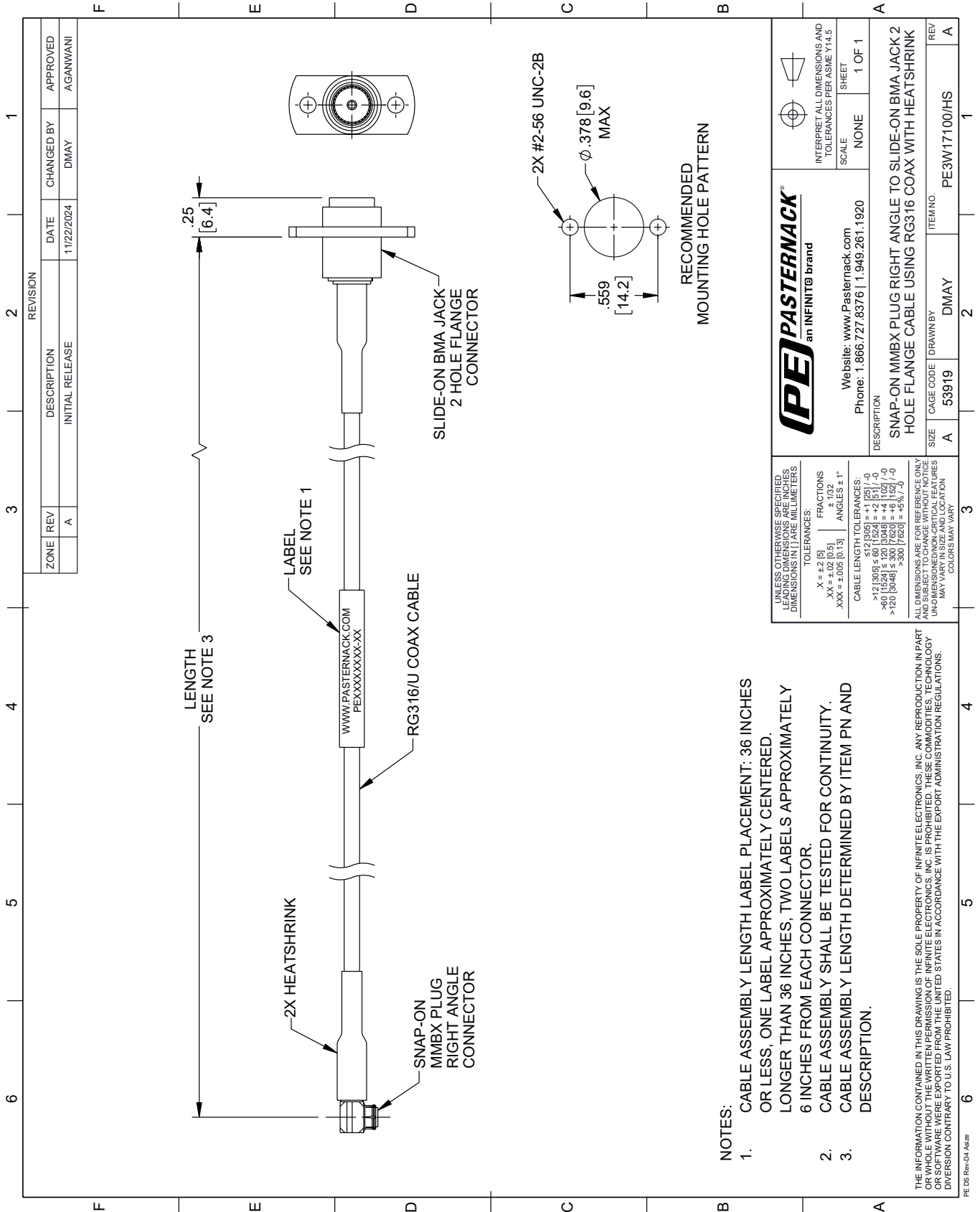
Click the following link (or enter part number in "SEARCH" on website) to obtain additional part information including price, inventory and certifications: [Snap-On MMBX Plug Right Angle to Slide-On BMA Jack 2 Hole Flange Cable Using RG316 Coax with HeatShrink PE3W17100/HS](#)

URL: <https://www.pasternack.com/snap-on-mmbx-plug-right-angle-to-slide-on-bma-jack-2-hole-flange-cable-using-rg316-with-heatshrink-pe3w17100-hs-p.aspx>

The information contained within this document is accurate to the best of our knowledge and representative of the part described herein. It may be necessary to make modifications to the part and/or the documentation of the part in order to implement improvements. Pasternack Enterprises reserves the right to make such changes as required. Unless otherwise stated, all specifications are nominal. Pasternack Enterprises does not make any representation or warranty regarding the suitability of the part described herein for any particular purpose, and Pasternack Enterprises does not assume liability arising out of the use of any part or document.

PE3W17100/HS CAD Drawing

Snap-On MMBX Plug Right Angle to Slide-On BMA Jack 2 Hole Flange Cable Using RG316 Coax with HeatShrink



ZONE	REV	DESCRIPTION	DATE	CHANGED BY	APPROVED
A	A	INITIAL RELEASE	11/22/2024	DMAY	AGANWANI

PE PASTERNAK an INFINITE brand		Website: www.Pasternack.com Phone: 1.866.727.8376 1.949.261.1920	INTERPRET ALL DIMENSIONS AND TOLERANCES PER ASME Y14.5
SCALE	NONE	SHEET	1 OF 1
DESCRIPTION	SNAP-ON MMBX PLUG RIGHT ANGLE TO SLIDE-ON BMA JACK 2 HOLE FLANGE CABLE USING RG316 COAX WITH HEATSHRINK		
SIZE	A	CAGE CODE	DMAY
ITEM NO.	PE3W17100/HS		