

N Male to SMA Male Low Loss Cable Using TCOM-400 Coax



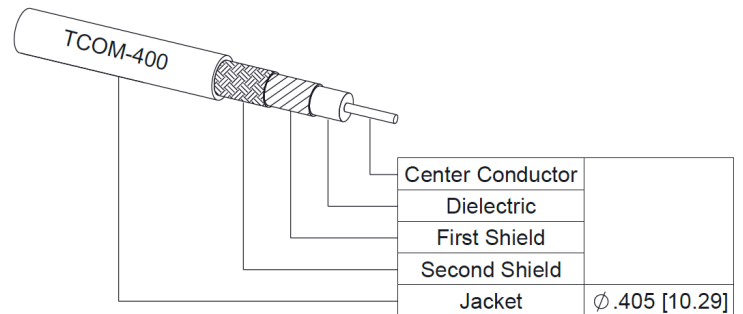
PE3W17725

Configuration

- Connector 1: N Male
- Connector 2: SMA Male
- Cable Type: TCOM-400
- Coax Flex Type: Flexible

Features

- Max Frequency 6 GHz
- Shielding Effectivity > 100 dB
- 85% Phase Velocity
- Double Shielded
- PE Jacket



Applications

- General Purpose
- Laboratory Use

Description

Pasternack's PE3W17725 type N male to SMA male cable using TCOM-400 coax is part of our full line of RF components available for same-day shipping. Pasternack's flexible RF cable assemblies are ideal for applications where tight bends and flexure are required. This Pasternack type N to SMA cable assembly has a male to male gender configuration with 50 ohm flexible TCOM-400 coax. The PE3W17725 type N male to SMA male cable assembly operates to 6 GHz. The double shielding of this Pasternack cable assembly provides excellent shielding effectiveness of better than 100 dB.

Custom versions of most RF cable assemblies can be built and shipped same day. Custom cable assembly lengths can be obtained by specifying the desired length on the web site at time of order or by contacting a sales representative. Other available RF cable assembly value added services include connector orientation or clocking, heat shrink booting and custom labeling. RF testing can also be performed to document the electrical performance of your cable assembly.

Electrical Specifications

Description	Minimum	Typical	Maximum	Units
Frequency Range	DC		6	GHz
VSWR			1.4:1	
Velocity of Propagation		85		%
RF Shielding	100			dB
Group Delay		1.2 [3.94]		ns/ft [ns/m]
Capacitance		23.9 [78.41]		pF/ft [pF/m]
Inductance		0.06 [0.2]		uH/ft [uH/m]
DC Resistance Inner Conductor		1.39 [4.56]		Ohms/1000ft [Ohms/Km]
DC Resistance Outer Conductor		1.47 [4.82]		Ohms/1000ft [Ohms/Km]

N Male to SMA Male Low Loss Cable Using TCOM-400 Coax



PE3W17725

Electrical Specifications

Description	Minimum	Typical	Maximum	Units
Jacket Spark			8,000	Vrms

Specifications by Frequency

Part Number	Length	Description	F1	F2	F3	F4	F5	Units	Weight (lbs)
			Frequency					MHz	
PE3W17725	Custom Lengths Available	Insertion Loss (Typ.)	0.021	0.03	0.044	0.072	0.117	dB/ft	
			0.07	0.1	0.15	0.24	0.39	dB/m	
PE3W17725-12	12 inch	Insertion Loss (Typ.)	0.23	0.23	0.25	0.28	0.32	dB	0.206
PE3W17725-24	24 inch	Insertion Loss (Typ.)	0.25	0.26	0.29	0.35	0.44	dB	0.286
PE3W17725-36	36 inch	Insertion Loss (Typ.)	0.27	0.29	0.34	0.42	0.56	dB	0.366
PE3W17725-48	48 inch	Insertion Loss (Typ.)	0.29	0.32	0.38	0.49	0.67	dB	0.446
PE3W17725-60	60 inch	Insertion Loss (Typ.)	0.31	0.35	0.42	0.56	0.79	dB	0.526

The insertion loss data for the base model does not include loss due to the connectors. Each length includes insertion loss due to the connectors.

Loss due to Connector 1:	0.1 dB
Loss due to Connector 2:	0.1 dB
Base Weight:	0.206 pounds
Additional Weight per Inch:	0.00666 pounds

Mechanical Specifications

Cable Assembly

Width/Diameter	.5 in [12.7 mm]
Weight	0.126 lbs [57.15 g]

Cable

Cable Type	TCOM-400
Impedance	50 Ohms
Inner Conductor Type	Solid
Inner Conductor Material and Plating	Copper Clad Aluminum
Dielectric Type	PE (F)
Number of Shields	2
Shield Layer 1	Silver Plated Copper Braid
Shield Layer 2	Tinned Copper Braid
Jacket Material	PE, Black
Jacket Diameter	0.405 in [10.29 mm]
One Time Minimum Bend Radius	1 in [25.4 mm]
Repeated Minimum Bend Radius	4 in [101.6 mm]
Bending Moment	0.5 lbs-ft [0.68 N-m]
Flat Plate Crush	40 lbs/in [0.71 Kg/mm]
Tensile Strength	160 lbs [72.57 Kg]

N Male to SMA Male Low Loss Cable Using TCOM-400 Coax



PE3W17725

Connectors

Description	Connector 1	Connector 2
Type	N Male	SMA Male
Impedance	50 Ohms	50 Ohms
Configuration	Straight	Straight
Mating Cycles		500
Contact Material and Plating	Brass, Gold	Brass, Gold
Contact Plating Specification	15 µin minimum	50µ" Minimum
Dielectric Type	PTFE	Teflon
Body Material and Plating	Brass, Tri-Metal	Brass, Tri-Metal
Coupling Nut Material and Plating	Brass, Tri-Metal	Brass, Tri-Metal
Hex Size	18 mm	
Torque		7 in-lbs 0.79 Nm

Environmental Specifications

Operating Range Temperature -40 to +85 deg C

Compliance Certifications (see [product page](#) for current document)

Plotted and Other Data

Notes:

N Male to SMA Male Low Loss Cable Using TCOM-400 Coax



PE3W17725

Typical Performance Data

How to Order

Part Number Configuration:

PE3W17725

- xx

uu

Unit of Measure:

cm = Centimeters

<blank> = Inches

Length

Base Number

Example: PE3W17725-12 = 12 inches long cable
PE3W17725-100cm = 100 cm long cable

N Male to SMA Male Low Loss Cable Using TCOM-400 Coax from Pasternack Enterprises has same day shipment for domestic and International orders. Our RF, microwave and millimeter wave products maintain a 99.4% availability and are part of the broadest selection in the industry.

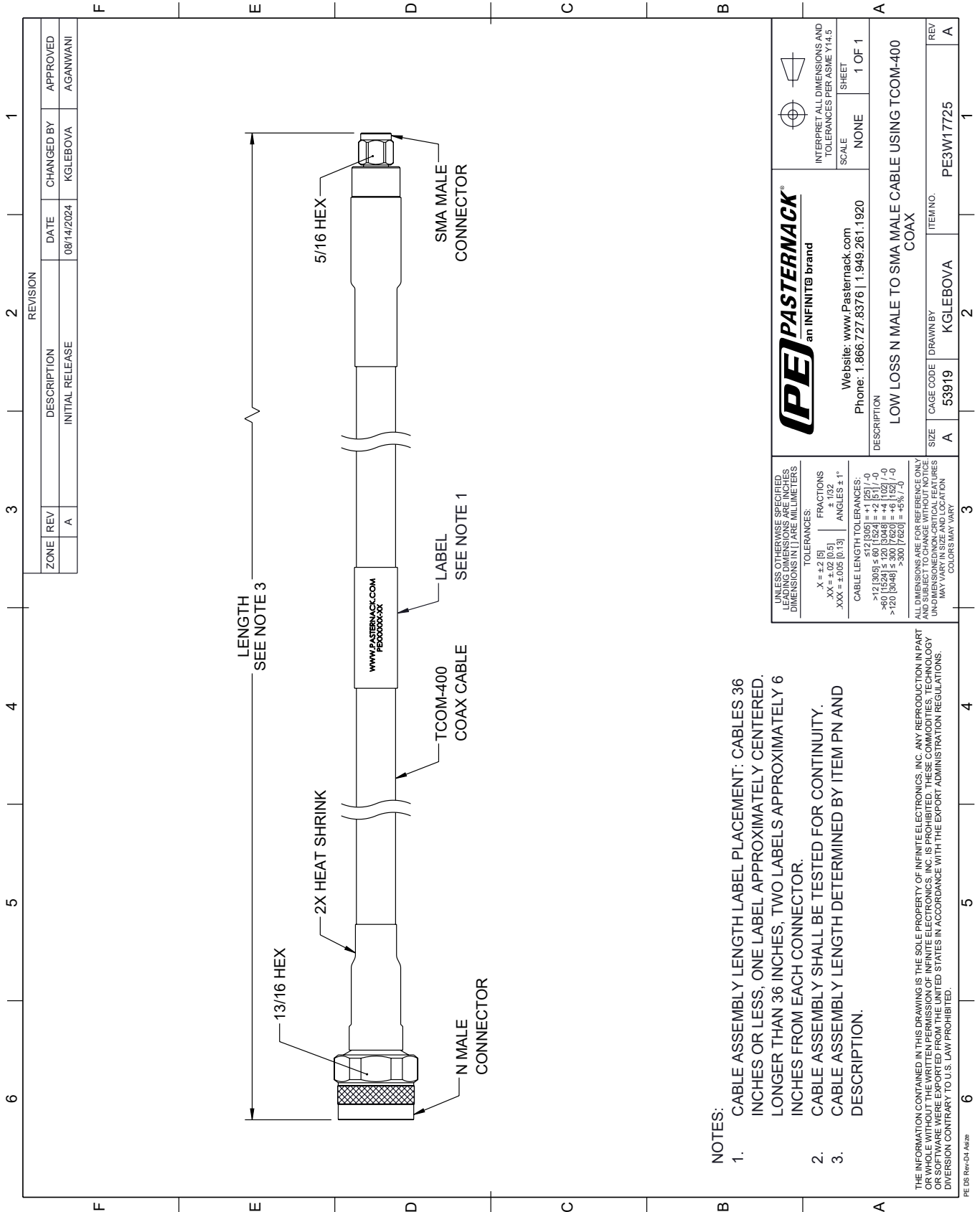
Click the following link (or enter part number in "SEARCH" on website) to obtain additional part information including price, inventory and certifications: [N Male to SMA Male Low Loss Cable Using TCOM-400 Coax PE3W17725](#)

URL: <https://www.pasternack.com/n-male-to-sma-male-low-loss-cable-using-tcom-400-pe3w17725-p.aspx>

The information contained within this document is accurate to the best of our knowledge and representative of the part described herein. It may be necessary to make modifications to the part and/or the documentation of the part in order to implement improvements. Pasternack Enterprises reserves the right to make such changes as required. Unless otherwise stated, all specifications are nominal. Pasternack Enterprises does not make any representation or warranty regarding the suitability of the part described herein for any particular purpose, and Pasternack Enterprises does not assume liability arising out of the use of any part or document.

PE3W17725 CAD Drawing

N Male to SMA Male Low Loss Cable Using TCOM-400 Coax



NOTES:

1. CABLE ASSEMBLY LENGTH LABEL PLACEMENT: CABLES 36 INCHES OR LESS; ONE LABEL APPROXIMATELY CENTERED. LONGER THAN 36 INCHES, TWO LABELS APPROXIMATELY 6 INCHES FROM EACH CONNECTOR.
2. CABLE ASSEMBLY SHALL BE TESTED FOR CONTINUITY.
3. CABLE ASSEMBLY LENGTH DETERMINED BY ITEM PN AND DESCRIPTION.

PE PASTERNAK
an INFINITI® brand

Website: www.pasternack.com
Phone: 1.866.727.8376 | 1.949.261.1920

INTERPRET ALL DIMENSIONS AND TOLERANCES PER ASME Y14.5

SCALE: NONE
SHEET: 1 OF 1

DESCRIPTION: LOW LOSS N MALE TO SMA MALE CABLE USING TCOM-400 COAX

SIZE	A	CAGE CODE	53919	DRAWN BY	KGLEBOVA	ITEM NO.	PE3W17725
REV	A						