

2 Watt RF Load Up to 6 GHz with TNC Male Tri-Metal Plated Brass

PE6172



Features

- DC to 6 GHz Frequency Range
- VSWR 1.2:1 Max
- Max Power 2 Watt (CW)
- TNC Male Coaxial Interface

Applications

- Wireless
- SatCom
- Radar Systems
- Test and Measurement
- Commercial and Military Communication

Description

Pasternack's PE6172 is an RF termination (also called RF load or dummy load) that operates from DC to 6 GHz and handles up to 2 Watt (CW). Our TNC termination / load has a male gender. PE6172 TNC load termination offers 1.2:1 max VSWR.

RF load / terminations are indispensable components in many RF, microwave and millimeter wave systems where signal reflection from unused ports can potentially damage the device or reduce the signal integrity. By using a terminator on an unused port with a matched load (dummy load), the incident energy will be absorbed with minimal reflection. These termination components are commonly used to terminate devices such as couplers, circulators, and switches. They are also widely used in measurement systems to ensure accurate results. Pasternack offers a huge selection of RF, microwave and millimeter wave terminations up to 65 GHz with excellent performance over the entire operating range and power handling capabilities up to 800 Watt (CW).

Electrical Specifications

Description	Minimum	Typical	Maximum	Units
Frequency Range	DC		6	GHz
Impedance		50		Ohms
VSWR, Input			1.2:1	
Input Power (CW)			2	Watts
derated linearly to 1W at +125°C				

Performance by Frequency

Description	F1	F2	F3	F4	F5	Units
Frequency Range	DC to 1	1 to 2.5	2.5 to 6			GHz
VSWR, Input Max	1.1:1	1.15:1	1.2:1			

Mechanical Specifications

Size

Length	1.1 in [27.94 mm]
Width	0.63 in [16 mm]
Weight	0.027 lbs [12.25 g]
Package Type	Connectorized

Configuration

Connector	TNC Male
Hex Size	14 mm

2 Watt RF Load Up to 6 GHz with TNC Male Tri-Metal Plated Brass



PE6172

Material Specifications

Description	Material	Plating
Connector 1 Contact	Brass	Gold
Insulation	PTFE	
Connector 1 Body	Brass	Tri-Metal
Coupling Nut	Brass	Tri-Metal
Housing	Brass	Tri-Metal

Environmental Specifications

Temperature

Operating Range -55 to +125 deg C

Compliance Certifications (see [product page](#) for current document)

Plotted and Other Data

Notes:

2 Watt RF Load Up to 6 GHz with TNC Male Tri-Metal Plated Brass from Pasternack Enterprises has same day shipment for domestic and International orders. Our RF, microwave and millimeter wave products maintain a 99.4% availability and are part of the broadest selection in the industry.

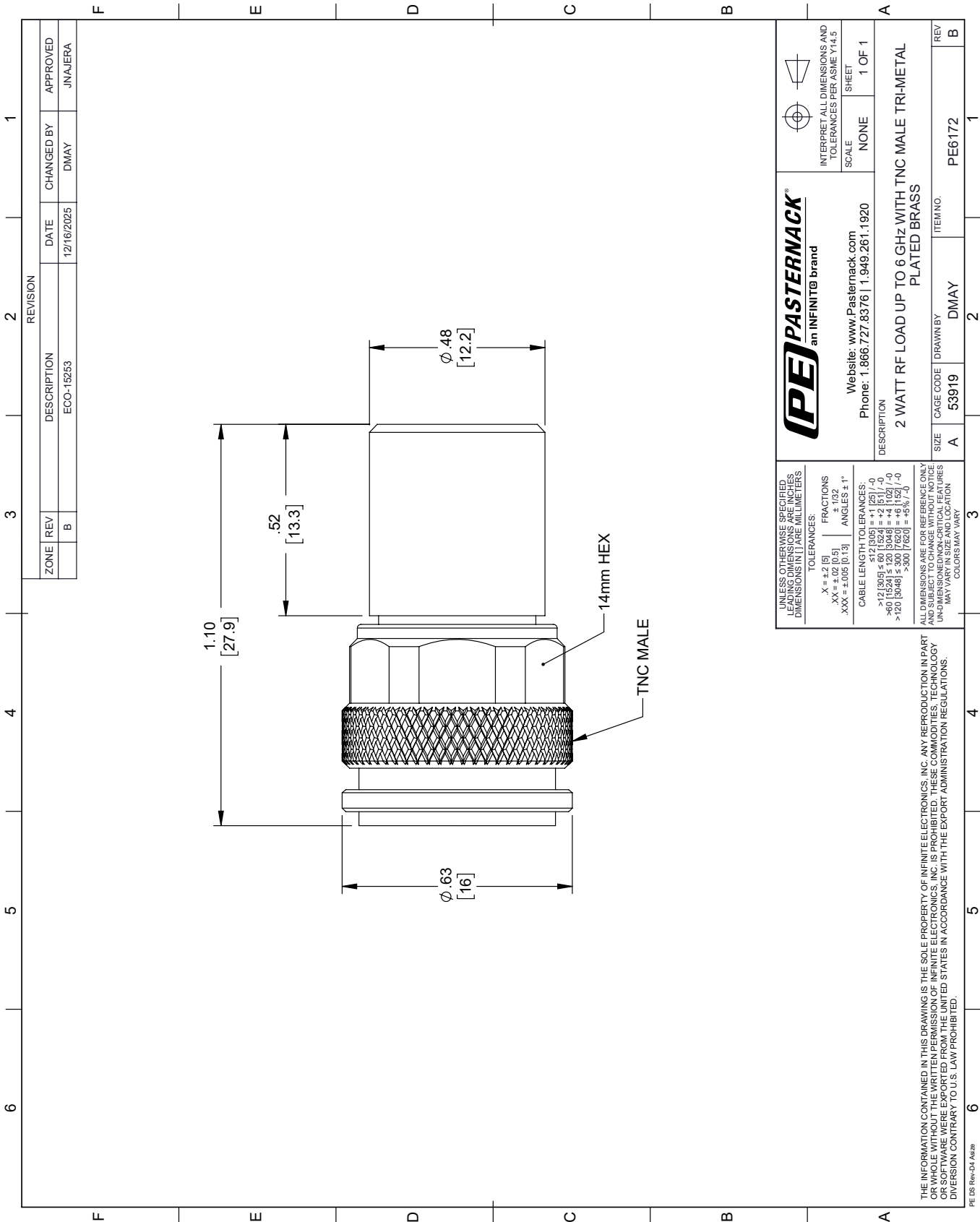
Click the following link (or enter part number in "SEARCH" on website) to obtain additional part information including price, inventory and certifications: [2 Watt RF Load Up to 6 GHz with TNC Male Tri-Metal Plated Brass PE6172](#)

URL: <https://www.pasternack.com/2-watts-tnc-male-rf-load-up-to-6-ghz-pe6172-p.aspx>

The information contained within this document is accurate to the best of our knowledge and representative of the part described herein. It may be necessary to make modifications to the part and/or the documentation of the part in order to implement improvements. Pasternack Enterprises reserves the right to make such changes as required. Unless otherwise stated, all specifications are nominal. Pasternack Enterprises does not make any representation or warranty regarding the suitability of the part described herein for any particular purpose, and Pasternack Enterprises does not assume liability arising out of the use of any part or document.

PE6172 CAD Drawing

2 Watt RF Load Up to 6 GHz with TNC Male Tri-Metal Plated Brass



REVISION		DATE		CHANGED BY		APPROVED	
ZONE	REV	DESCRIPTION		ECO-15253		JNAJERA	
	B			DMAY			

PE PASTERNAK an INFINITE® brand		Website: www.Pasternack.com Phone: 1.866.727.8376 1.949.261.1920		INTERPRET ALL DIMENSIONS AND TOLERANCES PER ASME Y14.5	
UNLESS OTHERWISE SPECIFIED, DIMENSIONS ARE IN INCHES. DIMENSIONS IN [] ARE MILLIMETERS.		TOLERANCES:		SCALE: NONE	
.X = ±.2 [5]		FRACTIONS ± 1/32		SHEET 1 OF 1	
.XX = ±.02 [0.5]		ANGLES ± 1°			
.XXX = ±.005 [0.13]					
CABLE LENGTH TOLERANCES:					
>12 [305] ≤ 60 [1524] = ±.125 [-0]					
>60 [1524] ≤ 120 [3048] = ±.125 [-0]					
>120 [3048] ≤ 300 [7620] = ±.125 [-0]					
>300 [7620] = ±.125 [-0]					
ALL DIMENSIONS ARE FOR REFERENCE ONLY. DIMENSIONS OF INDIVIDUAL PARTS MAY VARY IN SIZE AND LOCATION. COLORS MAY VARY.					
DESCRIPTION		ITEM NO.		REV	
2 WATT RF LOAD UP TO 6 GHz WITH TNC MALE TRI-METAL PLATED BRASS		53919		PE6172	
SIZE		DRAWN BY		B	
A		DMAY			

THE INFORMATION CONTAINED IN THIS DRAWING IS THE SOLE PROPERTY OF INFINITE ELECTRONICS, INC. ANY REPRODUCTION IN PART OR WHOLE WITHOUT THE WRITTEN PERMISSION OF INFINITE ELECTRONICS, INC. IS PROHIBITED. THESE COMMODITIES, TECHNOLOGY OR SOFTWARE WERE EXPORTED FROM THE UNITED STATES IN ACCORDANCE WITH THE EXPORT ADMINISTRATION REGULATIONS. DIVISION CONTRARY TO U.S. LAW PROHIBITED.

PE 09 Rev-D4 Adda