

## Voltage Variable PIN Diode Attenuator, 0 to 20 dB, 50 MHz to 2.2 GHz, Rated to 10 dBm, SMA, Solder Pin Control



### PE70A1031

#### Features

- Voltage Variable control of 20 dB Attenuator
- 50 MHz to 2200 MHz frequency range
- 20 dB Attenuation Range
- Insertion Loss 3 dB Typ
- SMA Female Connectors

#### Applications

- Electronic Warfare
- Electronic Countermeasures
- Microwave Radio
- VSAT
- Radar
- Fiber Optic
- Space Systems
- Test Instrumentation
- Telecom Infrastructure

#### Description

The PE70A1031 is a 20 dB Pin Diode Voltage Variable Attenuator with an operating frequency range from 50 MHz to 2200 MHz. The RF Input/Output Connectors are SMA Female. The attenuator uses a 5 Vdc supply and the voltage control that is used to select the attenuation state and a single 0 to +10 VDC bias that allows the operation at frequencies down to DC. The connectorized package has SMA connectors and has an operating temperature range of -20°C to +75°C.

#### Electrical Specifications (Values at +25°C, sea level)

Description	Minimum	Typical	Maximum	Units
Frequency Range	0.05		2.2	GHz
Attenuation Range	0		20	dB
			3	dB
VSWR			1.7:1	
RF Input Power			10	dBm
Switching Speed			50	us
Control Voltage	0		10	Volts
DC Power Supply				
to 5 VDC			2	mA
Attenuation Range	0		20	dB

#### Mechanical Specifications

##### Size

Length	0 in [0 mm]
Width	0 in [0 mm]
Height	0 in [0 mm]
Weight	0.281 lbs [127.46 g]
Input Connector	SMA Female
Output Connector	SMA Female
Power and Control	Solder Pin

Voltage Variable PIN Diode Attenuator, 0 to 20 dB, 50 MHz  
to 2.2 GHz, Rated to 10 dBm, SMA, Solder Pin Control



## PE70A1031

### Environmental Specifications

#### Temperature

Operating Range	-20 to +75 deg C
Storage Range	-40 to +85 deg C

**Compliance Certifications** (see [product page](#) for current document)

### Plotted and Other Data

#### Notes:

- Values at +25 °C, sea level  
ESD Sensitive Material, Transport material in Approved ESD bags. Handle only in approved ESD Workstation.

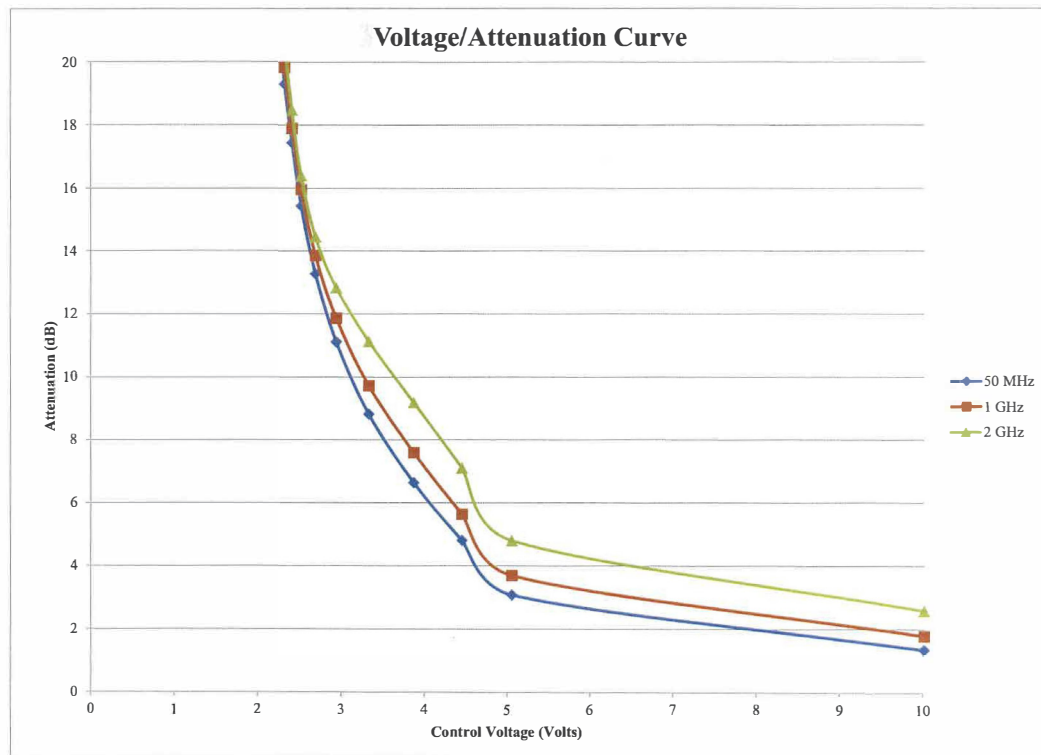
Voltage Variable PIN Diode Attenuator, 0 to 20 dB, 50 MHz to 2.2 GHz, Rated to 10 dBm, SMA, Solder Pin Control



## PE70A1031

### Functional Block Diagram

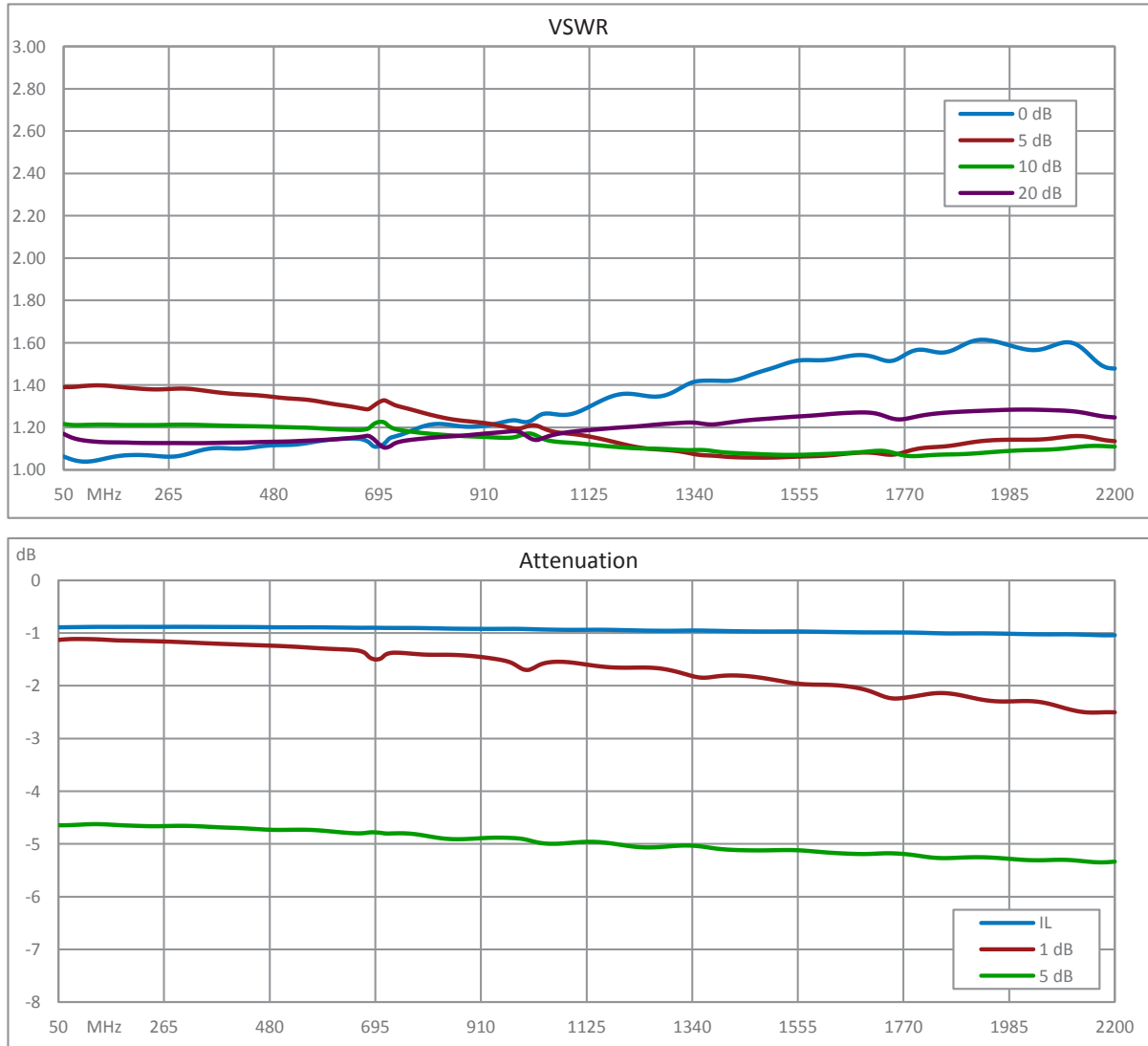
### Performance Data



Voltage Variable PIN Diode Attenuator, 0 to 20 dB, 50 MHz to 2.2 GHz, Rated to 10 dBm, SMA, Solder Pin Control



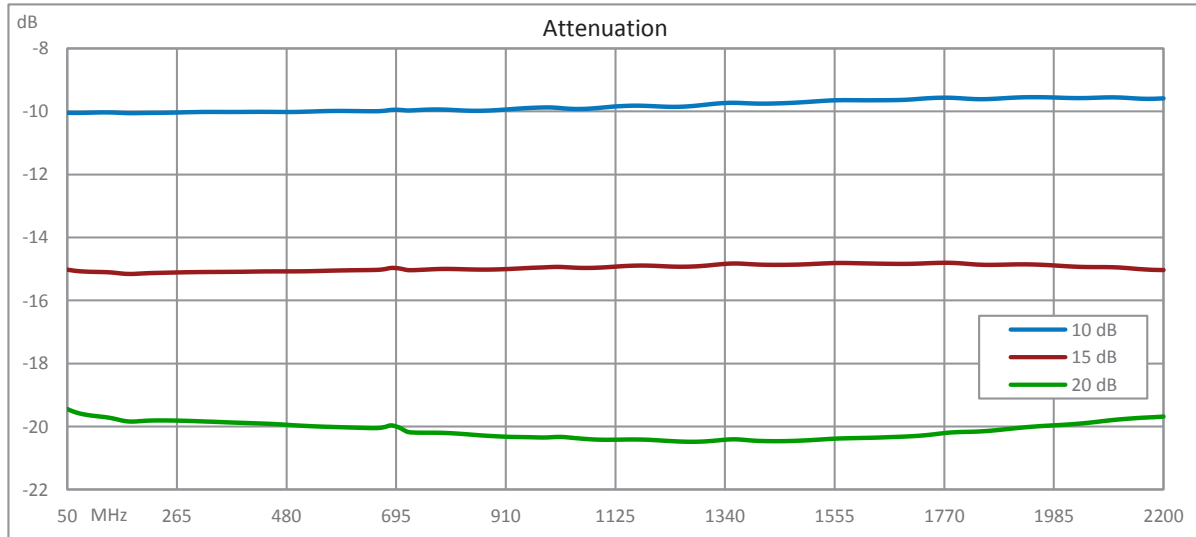
## PE70A1031



Voltage Variable PIN Diode Attenuator, 0 to 20 dB, 50 MHz to 2.2 GHz, Rated to 10 dBm, SMA, Solder Pin Control



## PE70A1031



Voltage Variable PIN Diode Attenuator, 0 to 20 dB, 50 MHz to 2.2 GHz, Rated to 10 dBm, SMA, Solder Pin Control from Pasternack Enterprises has same day shipment for domestic and International orders. Our RF, microwave and millimeter wave products maintain a 99.4% availability and are part of the broadest selection in the industry.

Click the following link (or enter part number in "SEARCH" on website) to obtain additional part information including price, inventory and certifications: [Voltage Variable PIN Diode Attenuator, 0 to 20 dB, 50 MHz to 2.2 GHz, Rated to 10 dBm, SMA, Solder Pin Control PE70A1031](https://www.pasternack.com/20db-voltage-variable-10-dbm-attenuator-pin-diode-2.2-ghz-sma-pe70a1031-p.aspx)

URL: <https://www.pasternack.com/20db-voltage-variable-10-dbm-attenuator-pin-diode-2.2-ghz-sma-pe70a1031-p.aspx>

The information contained within this document is accurate to the best of our knowledge and representative of the part described herein. It may be necessary to make modifications to the part and/or the documentation of the part in order to implement improvements. Pasternack Enterprises reserves the right to make such changes as required. Unless otherwise stated, all specifications are nominal. Pasternack Enterprises does not make any representation or warranty regarding the suitability of the part described herein for any particular purpose, and Pasternack Enterprises does not assume liability arising out of the use of any part or document.

PE70A1031 CAD Drawing

Voltage Variable PIN Diode Attenuator, 0 to 20 dB, 50 MHz to 2.2 GHz, Rated to 10 dBm, SMA, Solder Pin Control

