



WR-229 CMR-229 Flange to SMA Female Waveguide to Coax Adapter Operating from 3.3 GHz to 4.9 GHz

Waveguide to Coax Adapters Technical Data Sheet

PE9833

Features

- S-C Band, 3.3 to 4.9 GHz Frequency Range
- WR-229 Waveguide Interface with CMR-229 Flange
- SMA Female Coaxial Interface
- Comprehensive waveguide offerings also include E-Bends, H-Bends, Sections, Filters, Terminations, Couplers, and more.

Description

The PE9833 is a waveguide to coaxial adapter operating in the S-C band with a 3.3 to 4.9 GHz frequency range. This adapter offers a WR-229 waveguide interface size coupled with a precision tolerance CMR-229 flange. The PE9833 is constructed of aluminum to ensure durability and repeatable RF performance. The SMA female connector mates with commercially available 2.92mm and 3.5mm connectors. The package is REACH and RoHS compliant.

Configuration

Waveguide Size	WR-229
Flange	CMR-229
RF Connector	SMA Female
Impedance	50 Ohms
Body Geometry	Right Angle

Electrical Specifications

Description	Minimum	Typical	Maximum	Units
Frequency Range	3.3		4.9	GHz
VSWR			1.3:1	
Input Power (Peak)			150	Watts

Mechanical Specifications

Size	
Length	2 in [50.8 mm]
Width	3.16 in [80.26 mm]
Height	2.18 in [55.37 mm]
Weight	0.4964 lbs [225.16 g]

RF Connector

Connector Type	SMA Female
Body Material and Plating	Stainless Steel

Waveguide Interface

Waveguide Type	WR-229
Flange Type	CMR-229
Body Material and Plating	Aluminum

Click the following link (or enter part number in "SEARCH" on website) to obtain additional part information including price, inventory and certifications: [WR-229 CMR-229 Flange to SMA Female Waveguide to Coax Adapter Operating from 3.3 GHz to 4.9 GHz PE9833](#)



WR-229 CMR-229 Flange to SMA Female Waveguide to Coax Adapter Operating from 3.3 GHz to 4.9 GHz

Waveguide to Coax Adapters Technical Data Sheet

PE9833

Environmental Specifications

Temperature

Operating Range

-40 to +85 deg C

Compliance Certifications (see [product page](#) for current document)

Plotted and Other Data

Notes:

- Values at +25 °C, sea level unless stated otherwise

WR-229 CMR-229 Flange to SMA Female Waveguide to Coax Adapter Operating from 3.3 GHz to 4.9 GHz from Pasternack Enterprises has same day shipment for domestic and International orders. Our RF, microwave and millimeter wave products maintain a 99.4% availability and are part of the broadest selection in the industry.

Click the following link (or enter part number in "SEARCH" on website) to obtain additional part information including price, inventory and certifications: [WR-229 CMR-229 Flange to SMA Female Waveguide to Coax Adapter Operating from 3.3 GHz to 4.9 GHz PE9833](#)

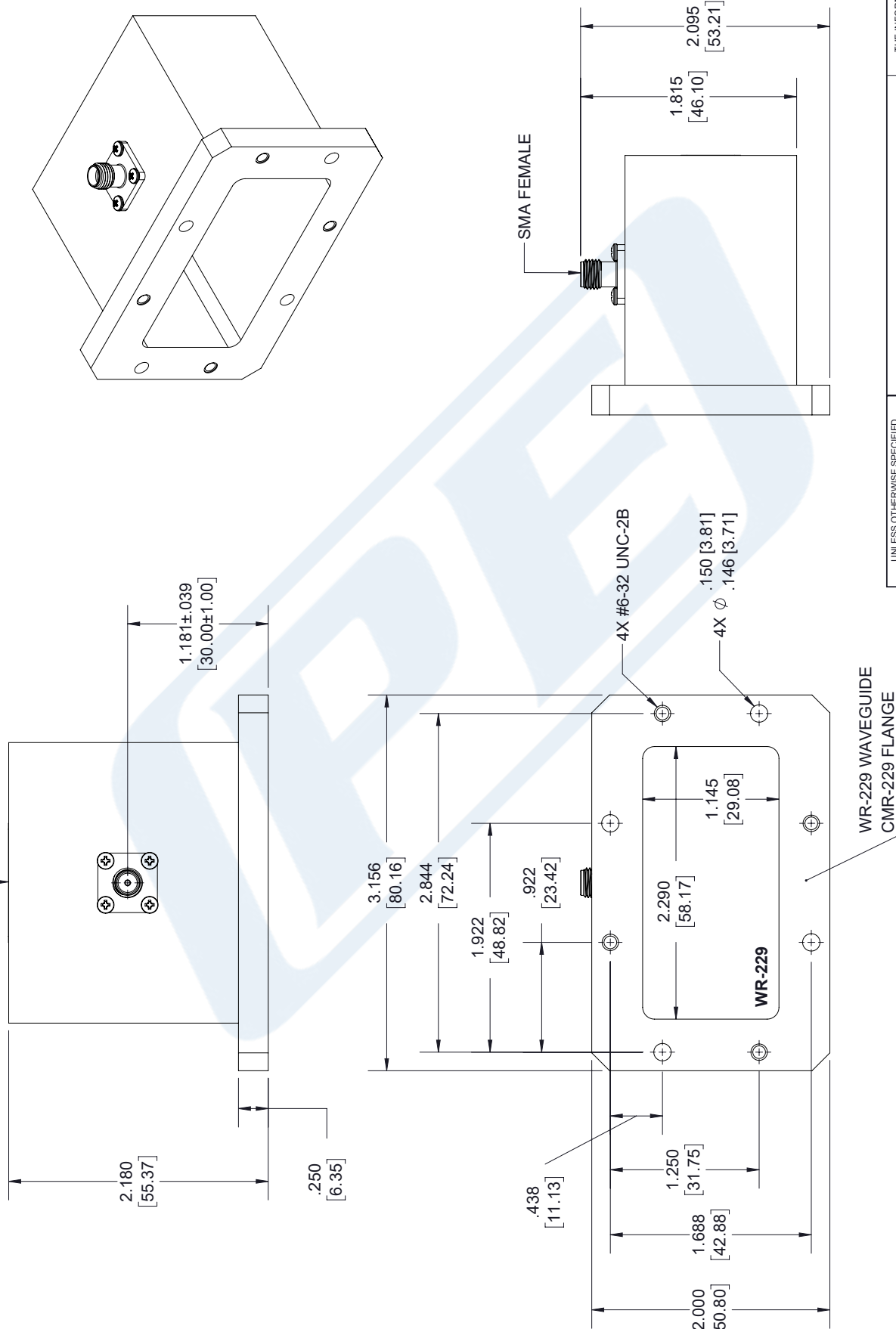
URL: <https://www.pasternack.com/wr229-cmr-229-flange-to-sma-female-waveguide-coax-adapter-4.9-ghz-pe9833-p.aspx>

The information contained in this document is accurate to the best of our knowledge and representative of the part described herein. It may be necessary to make modifications to the part and/or the documentation of the part, in order to implement improvements. Pasternack reserves the right to make such changes as required. Unless otherwise stated, all specifications are nominal. Pasternack does not make any representation or warranty regarding the suitability of the part described herein for any particular purpose, and Pasternack does not assume any liability arising out of the use of any part or documentation.

PE9833 CAD Drawing

WR-229 CMR-229 Flange to SMA Female Waveguide to Coax
Adapter Operating from 3.3 GHz to 4.9 GHz

REVISIONS			
REV.	DESCRIPTION	DATE	APPROVED
1.3	PCR PE9870 03082019	03/26/19	J.GARCIA



UNLESS OTHERWISE SPECIFIED LEADING DIMENSIONS ARE INCHES DIMENSIONS IN [] ARE MILLIMETERS				<div> PASTERNAK an INFINITI® brand</div> <p>Pasternack Enterprises, Inc. P.O.Box 16759, Irvine, CA 92623. Phone: 1.949.261.1920 1.866.727.8376 Fax: 1.949.261.7451 www.pasternack.com e-mail: sales@pasternack.com</p>				THE INFORMATION AND DESIGN IN THIS DOCUMENT IS THE PROPERTY OF PASTERNAK CORPORATION. ALL RIGHTS RESERVED.	
TOLERANCES:				SHEET 1 OF 1		SCALE N/A			
X±.2 [5.08] FRACTIONS									
XX±.01 [.25] +1/32									
XXX±.005 [.13] ANGLES ± 1°									
ALL DIMENSIONS SHOWN ARE FOR REFERENCE ONLY.									
THIRD-ANGLE PROJECTION						REV A			
				SIZE CAGE DRAWN BY PART NUMBER		REV			
A		53919		K.DANG		PE9833			

THESE COMMODITIES, TECHNOLOGY OR SOFTWARE WERE EXPORTED FROM THE UNITED STATES IN ACCORDANCE WITH THE EXPORT ADMINISTRATION REGULATIONS. DIVERSION CONTRARY TO U.S. LAW PROHIBITED.