

WR-112 Waveguide Electromechanical Relay SPDT/ DPDT Latching Switch, X Band 10 GHz, 7,000 Watts, UG-51/U Square Cover, 12V, TTL Logic

PEWGS6023



Features

- 7.05 to 10 GHz SPDT Waveguide Switch
- Optional DPDT Configuration
- WR-112 Waveguide with O-Rings
- Insertion Loss: 0.05 dB max
- Isolation: 80 dB min
- +12 Vdc Nominal Voltage
- Input Power Rating up to 7 kW CW max
- Latching TTL Logic Self Cut Off Actuator
- Position Indicator and Manual Override Access
- Fully Weatherized Package
- Quick Connect Circular DC Connector with Mate
- -40°C to +85°C Operating Temperature

Applications

- Electronic Warfare
- Electronic Countermeasures
- Microwave Radio
- VSAT
- Radar
- Space Systems
- Test Instrumentation
- Research and Development

Description

The PEWGS6023 electromechanical WR-112 waveguide switch operates across a wide frequency range from 7.05 GHz to 10 GHz and is configured for single pole double throw (SPDT) operation. A shorting plate on port 3 can be removed for optional double pole double throw (DPDT) operation. This innovative design features a latching TTL Logic controlled Self Cut Off actuator and patented motor drive with arc suppression. The motor drive housing supports a viewable position indicator window and a cover that can be removed for manual override access.

Impressive performance includes 0.02 dB typ insertion loss, 85 dB typ Isolation, 1.07:1 typ VSWR, and an operating life of 250K cycles minimum. The design operates across a temperature range of -40°C to +85°C, requires +12Vdc nominal bias voltage, and has an input power rating of up to 7 KW CW maximum. The waveguide ports have Grooved UG-51/U Square Cover Flanges (O-Rings included) for pressurized operation. The rugged package design is fully weatherized for up to 100% humidity exposure and supports a quick connect circular 10 pin MIL-SPEC DC bias connector with mate included.

Switch Type	SPDT
Actuator Type	Latching
Switching Sequence	Break Before Make
Actuator Options	TTL Logic, Self Cut Off, Window Indicator, Manual Override
TTL Control	on: 2.4 to 5.5 Volts
	off: 0 to 0.8 Volts
	5 mA at 5.5 Volts
	0 mA at 0.8 Volts
TTL Control Current	

Description	Min	Typ	Max	Units
Frequency Range	7.05		10	GHz
Impedance		50		Ohms
Operating Voltage	10	12	20	Volts
Actuating Current @ 12 Volts			1,000	mA
VSWR		1.07:1	1.1:1	
Insertion Loss		0.02	0.05	dB
Isolation	80	85		dB
Switching Time			100	ms
Input Power (CW)			7	kWatts

WR-112 Waveguide Electromechanical Relay SPDT/
DPDT Latching Switch, X Band 10 GHz, 7,000 Watts,
UG-51/U Square Cover, 12V, TTL Logic



PEWGS6023

Description	Min	Typ	Max	Units
Input Power (Peak/Unpressurized) 10% Duty Cycle			202	kWatts

Mechanical Specifications

Size

Length	5.2 in [132.08 mm]
Width/Diameter	2.25 in [57.15 mm]
Height	2.25 in [57.15 mm]
Weight	1.602 lbs [726.65 g]
Housing Material and Plating	Aluminum, Chem Film
Operating Life (Cold Switching)	250,000 Cycles
Operating Pressure	30 psig

Connectors

Waveguide Size	WR-112
Flange Type	Square Cover
Flange Designation	UG-51/U
Body Material and Plating	Aluminum, Chem Film
Body Plating Specification	MIL-DTL-5541 Type II Class 3

Mechanical Specification Notes:

Production Burn-In IAW MIL-DTL-55041 1500 cycles

Environmental Specifications

Temperature

Operating Range	-40 to +85 deg C
Storage Range	-55 to +100 deg C
Ingress Protection (IP) Rating	IP67
Humidity	0-100%, Fully Weatherized
ESD Sensitivity	ESD Sensitive Material, Transport material in Approved ESD bags. Handle in approved ESD Workstation.



Compliance Certifications (see [product page](#) for current document)

Plotted and Other Data

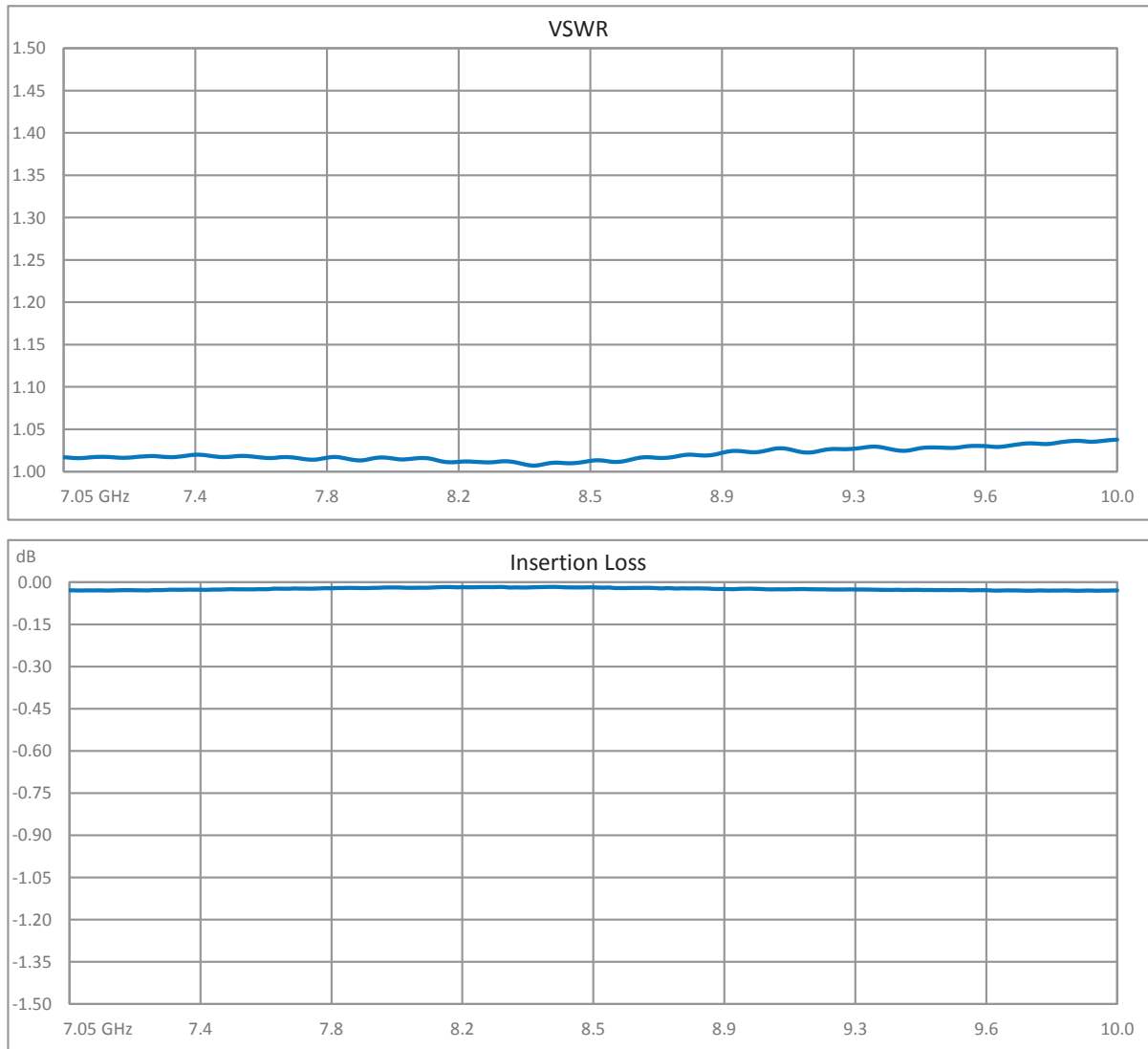
Notes:

WR-112 Waveguide Electromechanical Relay SPDT/
DPDT Latching Switch, X Band 10 GHz, 7,000 Watts,
UG-51/U Square Cover, 12V, TTL Logic



PEWGS6023

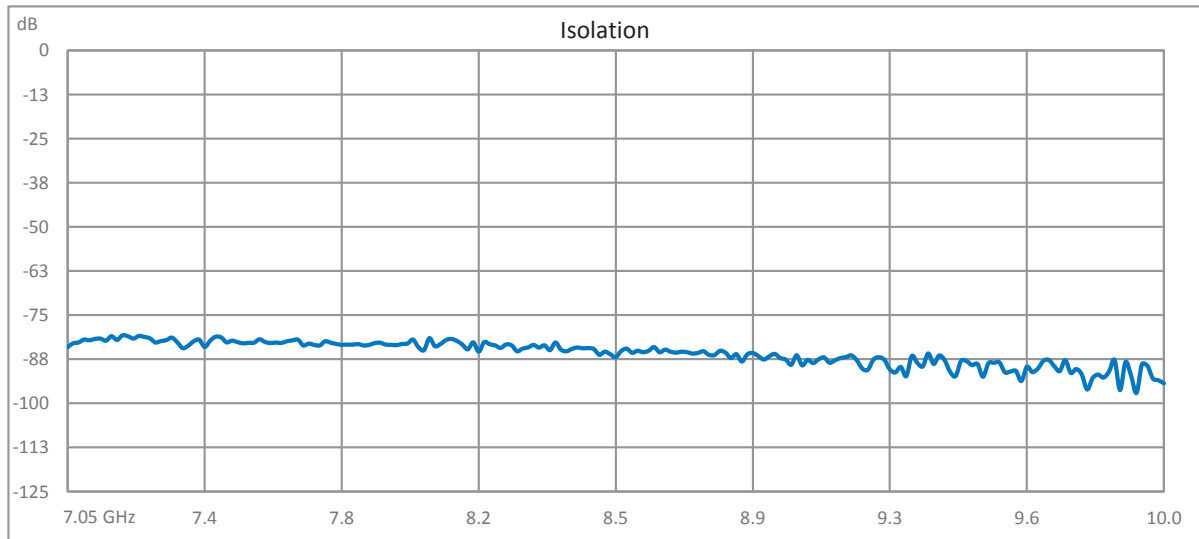
Typical Performance Data



WR-112 Waveguide Electromechanical Relay SPDT/
DPDT Latching Switch, X Band 10 GHz, 7,000 Watts,
UG-51/U Square Cover, 12V, TTL Logic



PEWGS6023



WR-112 Waveguide Electromechanical Relay SPDT/DPDT Latching Switch, X Band 10 GHz, 7,000 Watts, UG-51/U Square Cover, 12V, TTL Logic from Pasternack Enterprises has same day shipment for domestic and International orders. Our RF, microwave and millimeter wave products maintain a 99.4% availability and are part of the broadest selection in the industry.

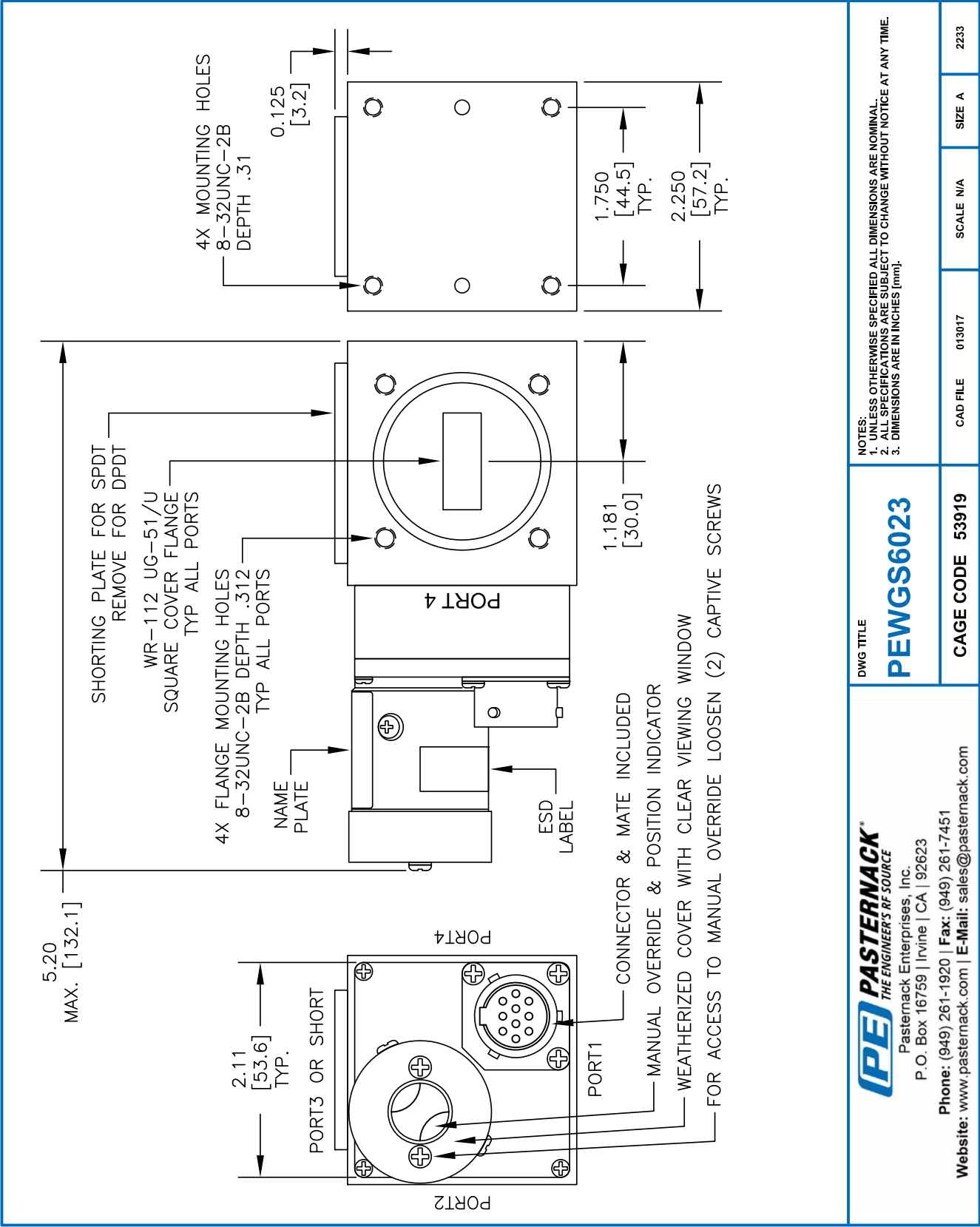
Click the following link (or enter part number in "SEARCH" on website) to obtain additional part information including price, inventory and certifications: [WR-112 Waveguide Electromechanical Relay SPDT/DPDT Latching Switch, X Band 10 GHz, 7,000 Watts, UG-51/U Square Cover, 12V, TTL Logic PEWGS6023](https://www.pasternack.com/wr-112-waveguide-electromechanical-relay-spdt-dpdt-latching-switch-x-band-10-ghz-7000-watts-ug-51-u-square-cover-12v-ttl-logic-pewgs6023-p.aspx)

URL: <https://www.pasternack.com/wr-112-waveguide-electromechanical-relay-spdt-dpdt-latching-switch-x-band-10-ghz-7000-watts-ug-51-u-square-cover-12v-ttl-logic-pewgs6023-p.aspx>

The information contained within this document is accurate to the best of our knowledge and representative of the part described herein. It may be necessary to make modifications to the part and/or the documentation of the part in order to implement improvements. Pasternack Enterprises reserves the right to make such changes as required. Unless otherwise stated, all specifications are nominal. Pasternack Enterprises does not make any representation or warranty regarding the suitability of the part described herein for any particular purpose, and Pasternack Enterprises does not assume liability arising out of the use of any part or document.

PEWGS6023 CAD Drawing

WR-112 Waveguide Electromechanical Relay SPDT/DPDT Latching Switch, X
Band 10 GHz, 7,000 Watts, UG-51/U Square Cover, 12V, TTL Logic



PEWGS6023 CAD Drawing

WR-112 Waveguide Electromechanical Relay SPDT/DPDT Latching Switch, X
Band 10 GHz, 7,000 Watts, UG-51/U Square Cover, 12V, TTL Logic

